

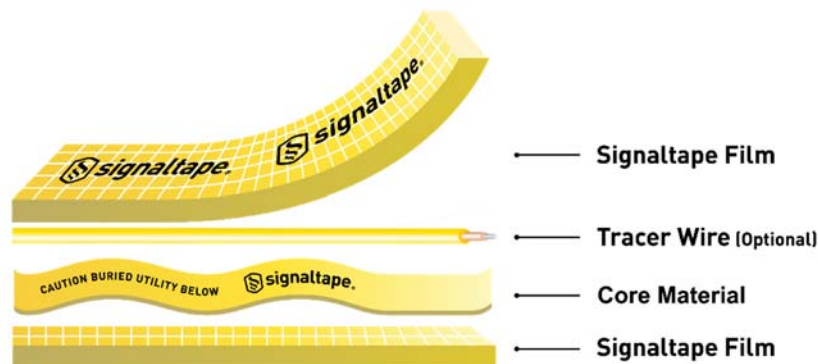


Technical Data Sheet

Engineered to protect, identify and locate all underground utilities.

Features & Benefits

- ✓ **High-Strength** – high tensile core material ensures tape seen by equipment operator
- ✓ **Detectable** – optionally includes any tracer wire or a 3M RF Path marker
- ✓ **Custom Legend** – text is fully customizable to include color logos, symbols and any size/font at no additional cost
- ✓ **Form Factor** – 1,000 ft (300 m) and lays flat making it a quick and easy installation
- ✓ **Hydrophobic** – makes the film more visible even in the toughest conditions



SignalTape® XT includes a 3,000 lb. tensile strength para-aramid fiber core material.

SignalTape® PG includes an 1,800 lb. tensile strength polyester fiber core material.

Physical Properties & Test Methods

Property	Component	Test Method	U.S. Value	Metric Value
Weight	4" width SignalTape	Mfg. Tested	28 LBS/1000 ft	13 kg/300 m
	6" width SignalTape	Mfg. Tested	35 LBS/1000 ft	16 kg/300 m
	12" width SignalTape	Mfg. Tested	55 LBS/1000 ft	25 kg/300 m
Thickness	PE film	ASTM D2103	11 MIL	.28 mm
	PE film + core material	ASTM D2103	80 MIL	2.03 mm
Break-Strength	XT core material	FED-STD-191A	3,000 lbs.	1360 kg
	PG core material	ASTM D6775	1,800 lbs.	816 kg
Printability	SignalTape PE film	ASTM D2578	34 dynes	34 dynes

Property	Component	Value
Elongation	4" & 6" width SignalTape	25% - 1.25/1 ratio of core material slack to film run
	12" width SignalTape	50% - 1.5/1 ratio of core material slack to film run
	XT core material	3 TO 4% AT ULTIMATE BREAK, LESS THAN 1.5% AT 90% OF ULTIMATE BREAK STRENGTH.
	PG core material	10 TO 13% AT ULTIMATE BREAK, LESS THAN 4% AT 90% OF ULTIMATE BREAK STRENGTH.

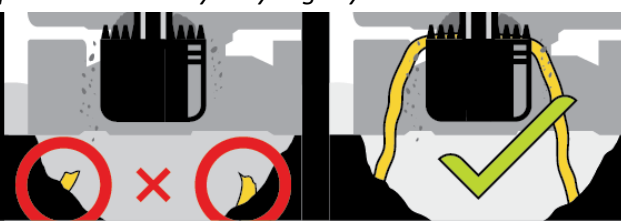
Property	Value
Chemical Resistance	Excellent resistance to acids. Good resistance to alkalis.
Other Properties	Not attached by mildew. Excellent resistance to aging.

Note: The values are based on averages using the test method provided and may vary slightly.



WWW.DAMAGEPREVENTION.COM

MARKER TAPE
ENGINEERED TO
BE SEEN





MARKER TAPE THAT WORKS!

SIGNALTAPE® XT

Designed to be pulled to the surface, directly alerting the equipment operator to the existence of a buried facility. This is due to the inclusion of a 3,000 lb. tensile strength para-aramid fiber core material that ensures Signaltape® does not shear until visible to equipment operator.

SIGNALTAPE®

PROFESSIONAL GRADE

Specifically designed to combat bucket shear when disturbed by excavation equipment. This is due to the inclusion of a 1,250 lb. tensile strength polyester fiber core material that ensures Signaltape® PG doesn't shear on both sides when struck by excavation equipment.

TRADITIONAL UNDERGROUND MARKER TAPE

All traditional underground marker tapes, including the premium reinforced and stretch varieties shear underground on both sides with a majority of the tape in the bucket not visible to the excavation crew.



Sinusoidal High Strength Core Material: Provides larger effective area for parallel strikes and provides extra slack ensuring buried maker tape is pulled to the surface.

